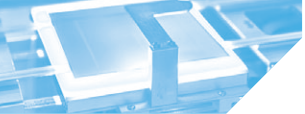


INSTALLATION MANUAL

IEC VERSION



1. DISCLAIMER OF LIABILITY

The installation, handling and use of Trina Solar Crystalline series modules are beyond company control. Accordingly, Trina Solar does not assume responsibility for loss, damage, injury or expense resulting from improper installation, handling, use or maintenance.

Trina Solar assumes no responsibility for any infringement of patents or other rights of third parties that may result from use of the module. No license is granted by implication or under any patent or patent rights.

Specifications included in this manual are subject to change without prior notice.

2. SAFETY PRECAUTIONS

- Solar photovoltaic (SPV) modules generate electricity when exposed to light. An array of many modules can cause lethal shocks and/or burn hazards. Only authorized and trained personnel should have access to the modules.
- Use properly insulated tools and appropriate protective equipment to reduce risk of electric shock.
- Do not stand or step on the module.
- Do not damage or scratch the front or backside surfaces of the module.
- Never use a module with broken glass or torn substrate. Broken modules cannot be repaired and contact with any module surface or frame can lead to electrical shock.
- Do not disassemble the modules or remove any part of the module.
- Protect plug contacts against soiling; do not make any plug connections using soiled plug contacts.
- Do not install or handle modules when they are wet or during periods of high wind.
- Do not short the positive and the negative of a single SPV module.
- Do not disconnect under load.
- Make sure connectors have no gap between insulators. A gap can cause fire hazard and/or danger of an electrical shock.
- Make sure that the polarity of each module or a string is not reversed considering the rest of the modules or strings
- Artificially concentrated sunlight should not be used on the SPV module.
- Maximum system voltage must not exceed 1000V DC.
- Under normal conditions, a SPV module is likely to produce more current and /or voltage than reported under standard test conditions. Accordingly, the value of I_{sc} marked on this module should be multiplied by a factor of 1.25 when determining the conductor current ratings, fuse sizes and size of controls connected to the SPV output.

3. UNPACKING AND STORAGE

- Before installation, keep all modules and electrical contacts clean and dry.
- If it is necessary to store modules temporarily, a dry, ventilated room should be used.
- When unpacking, carry modules with both hands. Do not place modules on top of each other.

4. PRODUCT IDENTIFICATION

We recommend that you take note of the serial number, each individual module has a unique serial number. It is attached to the backsheets next to the product sticker.

5. ENVIRONMENTAL CONDITIONS AND SITE SELECTION

5.1 CLIMATE CONDITION

Install Trina Solar Crystalline series modules in the following conditions:

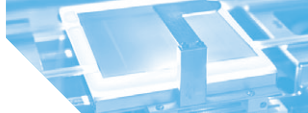
Ambient Temperature:	-40°C to +40°C
Operating Temperature:	-40°C to +85°C
Storage Temperature:	-20°C to +40°C
Humidity:	below 85RH%
Mechanical Load Pressure:	below 112.78lb / ft ² (5400Pa) [*]

^{*} Note: Mechanical load bearing (including wind and snow loads) of each module is based on mounting methods. Professional system installers must be responsible for calculating mechanical loads according to system design.

The modules have been designed according to IEC61215 edition 2 and IEC61730 standards.

5.2 SITE SELECTION

- In most applications, Trina Solar SPV modules should be installed in a location where they will receive maximum sunlight throughout the year.
- Modules should be free from shaded at any time of the day because of buildings, trees, chimney, etc.
- Do not install SPV modules in environments subject to corrosion, such as coastal areas, or areas with high levels of sulfur, etc.



- Do not install SPV modules in a location where it would be immersed in water or continually exposed to water from a sprinkler or fountain, etc.
- For roof installations, modules should be mounted over a fire resistant covering, with adequate ventilation between the module backsheet and the mounting surface.

5.3 MODULE TILT ANGLE

Trina Solar SPV modules connected in series should be installed at the same orientation and angle. Differing orientations or angles may cause a loss of power output due to differing amounts of sunlight exposure for each module.

Typically, the optimal tilt for a SPV module is roughly the same as the latitude of installation location.

6. MOUNTING INSTRUCTIONS

6.1 MOUNTING METHODS

SPV modules can be mounted to the substructure using two methods:

(1) Screw fitting: Using corrosion-proof screws (M8) in the existing installing holes in the module frame.

- The frame of each module has 4 mounting holes used to secure the modules to supporting structure.
- The module frame must be attached to a mounting rail using M8 corrosion-proof screws together with spring washers and flat washers in four symmetrical locations on the SPV module.
- Applied torque should be 8 Newton-meters. Please find detailed mounting information in Figure 1.

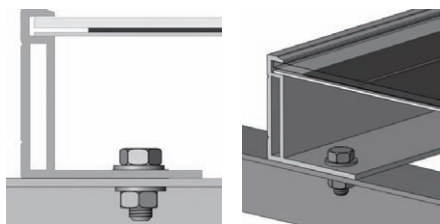
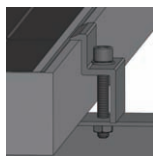


Figure1. SPV module installed with screw fitting method¹

(2) Clamp fitting: Using suitable module clamps on the side of the module frame to mount the modules (including "portrait orientation" and "landscape orientation")

- Use a certain number of clamps to fix modules on the mounting rail.
- Modules clamps should not come into contact with the front glass and must not deform the frame.
- Be sure to avoid shadowing effects from the module clamps.
- The module frame is not to be modified under any circumstances.
- When choosing this type of clamp-mounting method, please be sure to use at least four clamps on each module, two clamps should be attached on the long sides of the module (for portrait orientation) and short sides of the module (for landscape orientation). Depending on local wind and snow loads, additional clamps may be required to ensure modules can bear the load.
- Applied torque should be 8 Newton-meters. Please find detailed mounting information in Figure 2.

Fringe modules installation



Middle modules installation

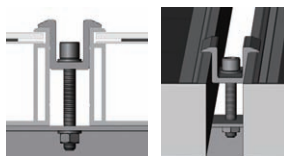


Figure2. SPV module installed with clamp fitting method²

* Note:

- Clearance between modules frames and surface of the wall or roof is required to prevent wiring damage and to allow air to circulate behind the module. Recommended stand-off height is 115mm.
- When mounting, be sure that the module's drain holes are not blocked.

We recommend installing modules in landscape and/or portrait orientation. Please refer to the following diagrams (Figure 3 & 4).

(1) Landscape orientation installation

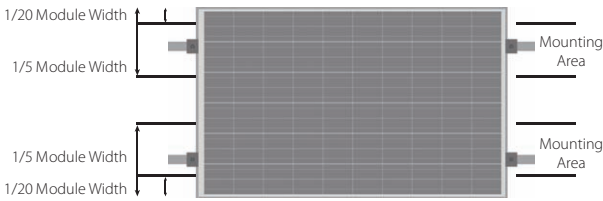


Figure3. Mechanical dimensions when modules installed in landscape orientation with clamp fitting method

(2) Portrait orientation installation

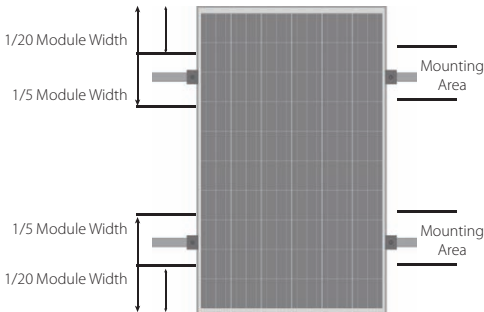


Figure4. Mechanical dimensions when modules installed in portrait orientation with clamp fitting method

6.2 GROUNDING

- All module frames and mounting racks must be properly grounded in accordance with respective national electrical code.
- Proper grounding is achieved by bonding the module frame(s) and all metallic structural members together continuously using a suitable grounding conductor. The grounding conductor or strap may be copper, copper alloy, or other material acceptable for use as an electrical conductor per respective National Electrical Codes. The grounding conductor must then make a connection to earth using a suitable earth ground electrode.
- We recommending using the following methods to ground properly:

Method 1: The Ilscro GBL-4DBT Lay-in lug as shown in the following picture:

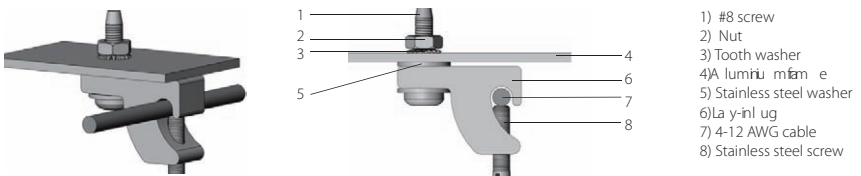


Figure5. Ilscro GBL-4DBT Lay-in lug

- Secure a grounding lug (e.g. tin-plated copper) with a stainless steel bolt and nut.
- Insert a stainless steel washer (e.g. flat, locking) between the grounding lug and frame.
- Make electrical contact by penetrating the anodized coating of the aluminium frame, usually a stainless steel toothed washer can be inserted between the nut and the frame to break the anodized layer of frame.



6.3 MODULE WIRING

Each module has two 4mm² diameter standard 90°C sunlight resistant output cables each terminated with plug & play connectors. This cable is suitable for applications where wiring is exposed to the direct sunlight. We recommend that all wiring and electrical connections comply with the appropriate national electrical code.

For field connections, use the minimum 4mm² diameter copper wires insulated for a minimum of 90°C and Sunlight resistance as well.

- The minimum and maximum outer diameters of the cable are 5 to 7mm².

7. MAINTENANCE AND CARE

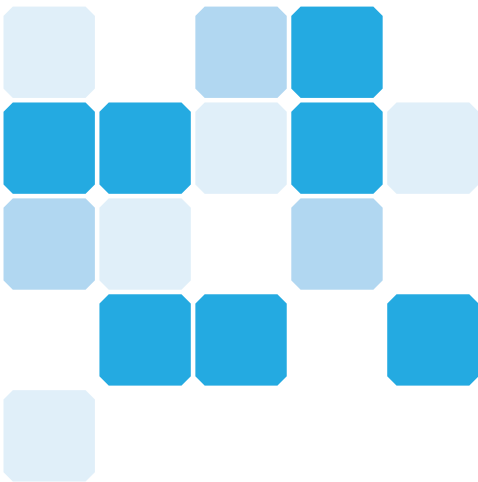
- Under most weather conditions, normal rainfall is sufficient to keep the PV module glass surface clean. If dust or dirt build-up becomes excessive, clean the glass only with a soft cloth using mild detergent and water.
- Do not clean the modules with cold water during the warmer hours of the day in order to avoid creating any thermal shock that may damage the module.
- Be cautious when cleaning the back surface of the module to avoid penetrating the substrate material. Modules that are mounted flat (0° tilt angle) should be cleaned more often, as they will not "self clean" as effectively as modules mounted at a 15° tilt or greater.
- At least once a year, it is recommended to check the torque of terminal screws and the general condition of wiring. Also, check that mounting hardware is properly torqued. Loose connections will result in damage to the array.
- Modules that have been replaced must be of the same type. Do not touch live parts of cables and connectors. Use appropriate safety equipment (insulated tools, insulating gloves, etc.) when handling modules.
- Cover the front surface of modules by an opaque material when repairing. When exposed to sunlight, modules generate high voltage and thus dangerous.

Trina Solar SPV modules are equipped with bypass diodes in the junction box. This minimizes module heating and current losses.

- Do not try to open the junction box to change the diodes even if it malfunctions. This should be done by qualified personnel only.
- In a system that uses a battery, blocking diodes are typically placed between the battery and the SPV module output to prevent battery discharge at night.

Trina Solar is a member of the European PV Cycle Association. Through the pre-financed PV Cycle program, Trina Solar SPV modules will be taken back and treated in an environmentally sustainable manner.

WARNING: For any electrical maintenance, the SPV system must first be shut down. Improper maintenance can cause lethal electric shock and/or burns.



ASIA PACIFIC

CHINA

Headquarters

No. 2 Trina Road, Trina PV Industrial Park, New District, Changzhou, Jiangsu, 213031, China

T +86 519 8548 2008

F +86 519 8517 6021

E sales@trinasolar.com

CHINA

Rooms 1704-1706, CCG International Plaza, No. 333 North Caoxi Road, Shanghai 200030 China

T +86 21 6057 5310

F +86 21 6057 5333

E sales@trinasolar.com

CHINA

X-17XL, Oriental Kenzo office building, NO.48 Dongzhimenwai Street, Dongcheng District, Beijing 100027,

T +86 10 5817 4080

F +86 10 5817 4020

E sales_china@trinasolar.com

KOREA

Trina Solar Korea Ltd.

B-912, Intellige 2, 24 Jeongja-dong, Bundang-gu, Seongnam-si, Gyeonggi-do, 463-841 Korea

T +82 31 782 1588

F +82 31 718 8820

E korea@trinasolar.com

JAPAN

Trina Solar Japan Ltd

World Trade Center Building 33th Floor, 4-1 2-chome Hamamatsu-cho Minato-ku, Tokyo 105-6133 Japan

T +81 3 3437 7000

F +81 3 3437 7001

E japan@trinasolar.com

AUSTRALIA

Macquarie House Sydney Level 13, Office Number 1315 167 Macquarie Street Sydney, NSW 2000 Australia

T +61 2 8667 3088

F +61 2 8667 3200

E australia@trinasolar.com

EUROPE

GERMANY

Einsteinting 26, D-85609 Aschheim/München, Germany

T +49 89 122 8492 50

F +49 89 122 8492 51

E germany@trinasolar.com

ITALY

Via Santa Maria Valle 3 20123 Milan Italy

T +39 02 0068 1521

F +39 02 0068 1400

E italy@trinasolar.com

SPAIN

Paseo de la Castellana 141, 8th Floor, 28046 Madrid, Spain

T +34 91 572 6576

F +34 91 572 6621

E spain@trinasolar.com

SWITZERLAND

European HQ

Trina Solar (Schweiz) AG

Leutschenbachstr. 45, 8050 Zurich, Switzerland

T +41 43 299 68 00

F +41 43 299 68 10

E europe@trinasolar.com

NORTH AMERICA

U.S.A.

Trina Solar (U.S.), Inc.

100 Century Center, Suite 340, San Jose CA 95112, USA

T +1 800 696 7114

F +1 800 696 0166

E usa@trinasolar.com